

# HOLIMPIA



Pimento House Bridle Mews, London, E1 8ZD

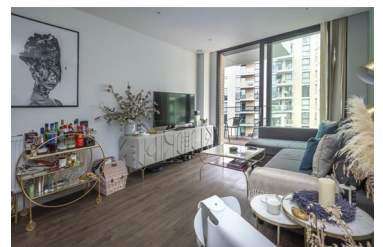
£3,000 Per month



Welcome to this exquisite two-bedroom flat located in the prestigious Bridle Mews, London. Nestled on the fourth floor of Pimento House within the sought-after Goodman's Fields development.

As you step into this immaculate apartment, you are welcomed by a spacious open-plan reception area that flows effortlessly into a luxury fitted kitchen, making it perfect for both entertaining guests and enjoying everyday living. The master bedroom features a dressing area, providing ample storage and a touch of elegance, while the second bedroom is generously sized, offering comfort and style. A large balcony presents a serene view of the beautifully landscaped internal garden, ideal for sipping your morning coffee or unwinding after a long day.

Residents of Goodman's Fields enjoy a wealth of exceptional amenities, including a state-of-the-art spa, a refreshing swimming pool, a private cinema,



2, Warburton Rd, London, E8 3RT

Tel: 020 3633 8892 Email: [info@holimpia.co.uk](mailto:info@holimpia.co.uk) [www.altosoftware.co.uk](http://www.altosoftware.co.uk)